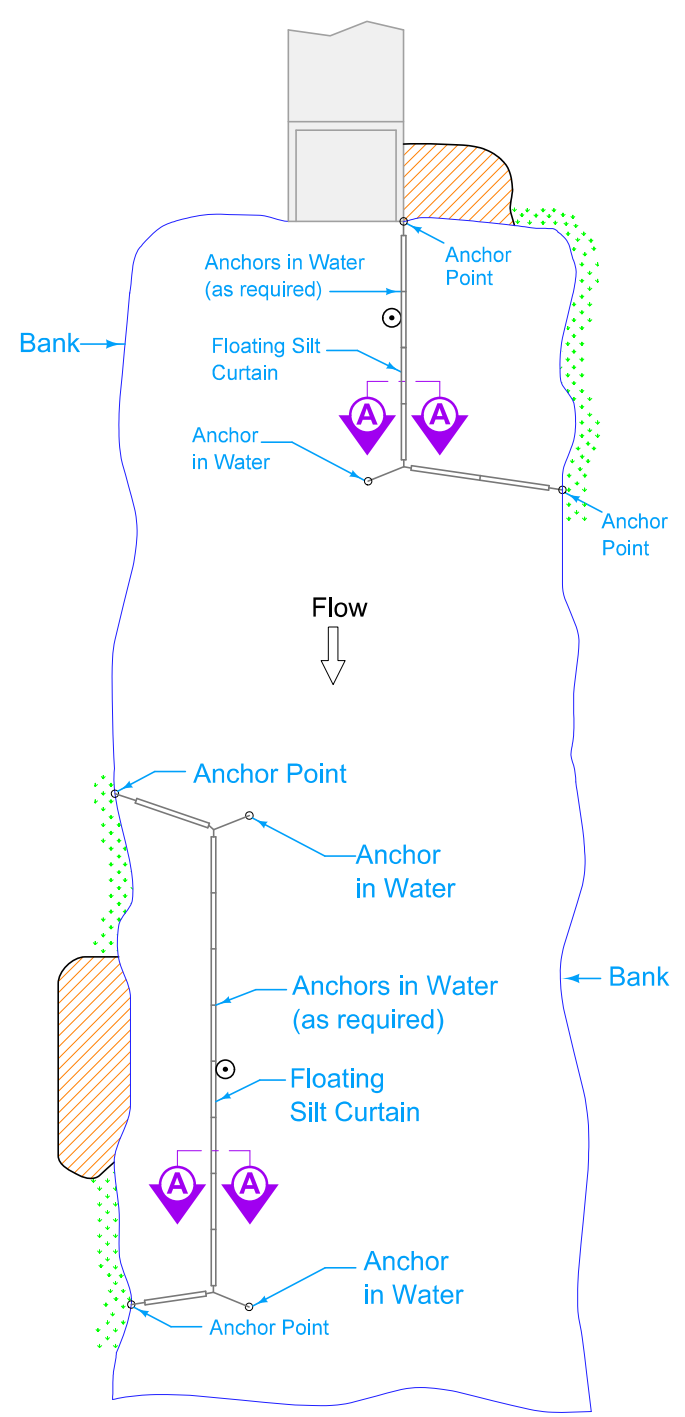
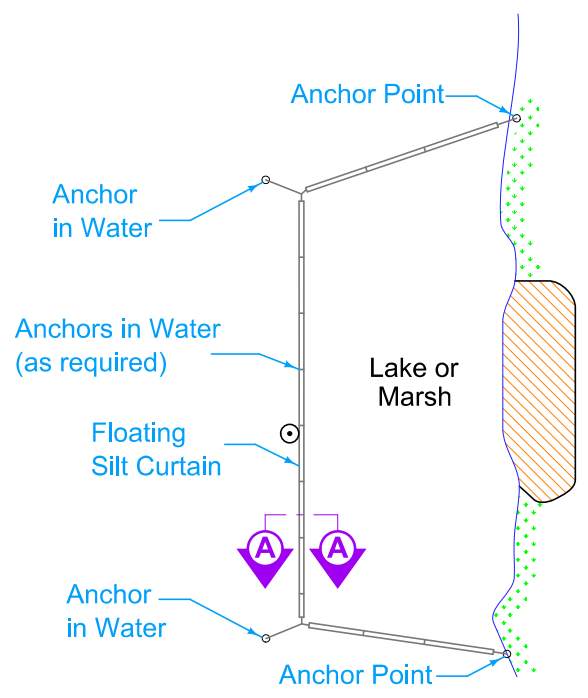


PLAN
Disturbed Area within Stream



PLAN
Disturbed Area Adjacent
to Stream



PLAN
Still Water Only

Keep silt curtain as close to work area as possible.

Depth of curtain is the dimension of the curtain fabric extending below the flotation, i.e. hanging in the water.

Install according to Hanging Installation unless specified otherwise.

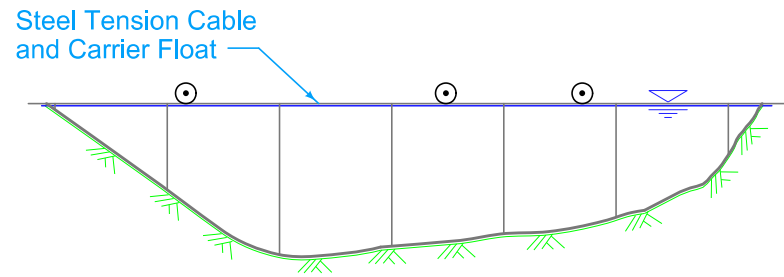
LEGEND

- Carrier Float
- Buoy
- Undisturbed Vegetation
- Disturbed Soil

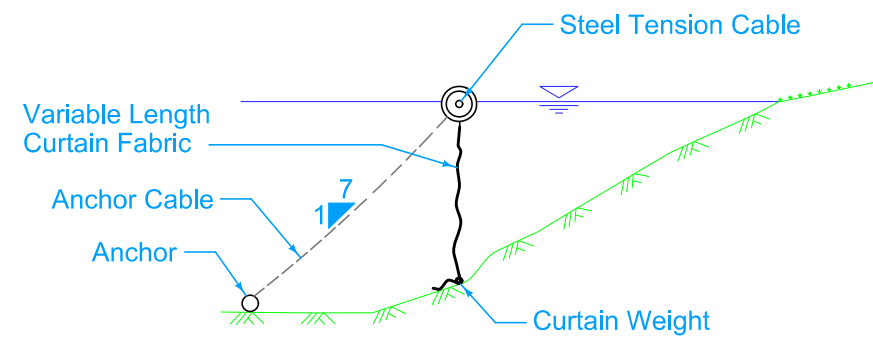
- Possible Contract Items:
- Clean-out of Floating Silt Curtain (Containment)
 - Floating Silt Curtain (Containment)
 - Floating Silt Curtain (Hanging)
 - Maintenance of Floating Silt Curtain

Possible Tabulation:
100-10

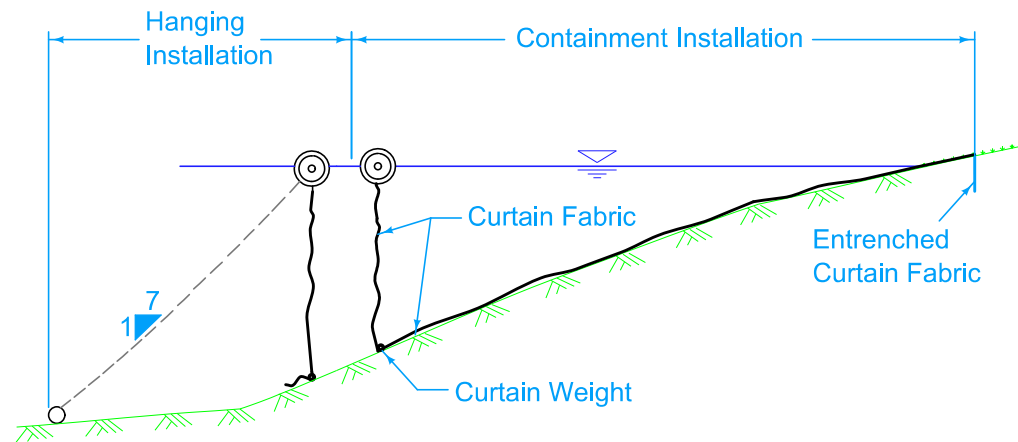
IOWA DOT STANDARD ROAD PLAN	REVISION	
	6	10-21-14
	EC-202	
SHEET 1 of 2		
REVISIONS: Removed 100' typical spacing between anchors on page 2. Added possible contract item. Removed sections of standard notes and circle note 1.		
<i>Shawn Miller</i> APPROVED BY DESIGN METHODS ENGINEER		
FLOATING SILT CURTAIN		



PROFILE

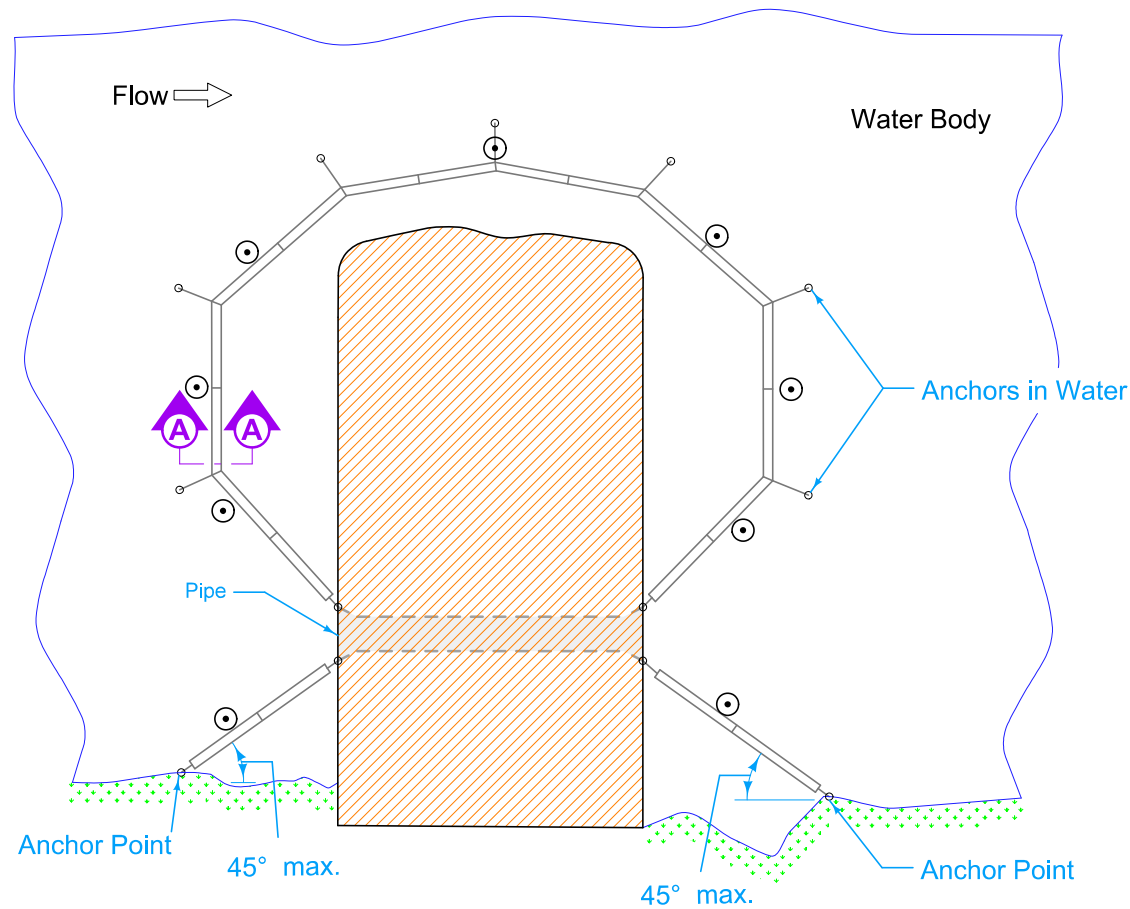


SECTION A-A
Hanging Installation

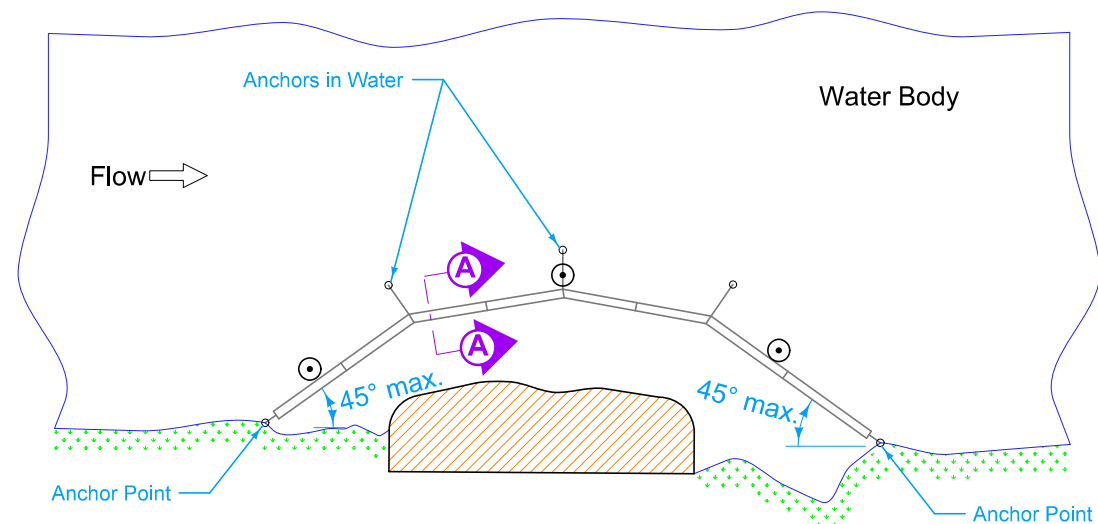


SECTION A-A ①
Containment Installation

LEGEND	
	Carrier Float
	Buoy
	Undisturbed Vegetation
	Disturbed Soil
	Water Surface





PLAN
Stream Crossing or Causeway
(with pipe)



PLAN
Causeway or Pad

① When Containment Installation is specified, it will be in combination with a Hanging Installation that is paid for separately.

 IOWA DOT	REVISION	
	6	10-21-14
	EC-202	
	SHEET 2 of 2	
REVISIONS:	Removed 100' typical spacing between anchors on page 2. Added possible contract item. Removed sections of standard notes and circle note 1.	
		
APPROVED BY DESIGN METHODS ENGINEER		
FLOATING SILT CURTAIN		